

AUSTRALIAN NATIONAL KENNEL COUNCIL



Extended Breed Standard of
**THE WEIMARANER &
WEIMARANER LONGHAIR**

Produced by
National Weimaraner Council (Australia)
in conjunction with
The Australian National Kennel Council

Standard adopted by ANKC 1994
Standard amended 2004
FCI Standard No: 99D dated 27/02/90

Breed Standard Extension adopted by ANKC 2006
Copyright Australian National Kennel Council 2006

Extended Standards are compiled purely for the purpose of training Australian judges and students of the breed.

In order to comply with copyright requirements of authors, artists and photographers of material used, the contents must not be copied for commercial use or any other purpose. Under no circumstances may the Standard or Extended Standard be placed on the Internet without written permission of the ANKC.

ORIGIN OF THE WEIMARANER

As always when delving into breed history, one can but guess the probable events of early times leading to our present day breeds of dog. In the case of the Weimaraner, it is perhaps a bit easier, for the fact that the forebears of these fine dogs are the Red Schweisshunden is generally agreed upon, just as it is considered to be a fact that the latter trace back to the St. Hubert Hound. The presence of the Red Schweisshund in the Weimaraner's past also accounts for the colour indigenous to the breed, since a genetic recessive in red and tan dogs can produce a silver-taupe colour (sometimes even appearing almost lavender).

It is also an accepted belief that some Pointer stock was very likely introduced into the establishment of the breed, adding to the already present trailing tendencies for pointing and retrieving. Does that not seem logical when one considers how outstanding the modern Weimaraner is in all three roles?

The great early sponsor of the forerunner of the modern Weimaraner was the Grand Duke Karl August, head of the Court at Weimar, who was born late in the 18th century. Weimar is the capital city of Thuringia, an area in which several popular breeds had their beginnings.

The Weimar Pointer, as the breed at that time was known, had been used originally in big game hunting. With the progress of civilisation, however, a gradual scarcity of this type of game took place, the transition being from wild boar, wolves, bear and so forth, to birds and small game. The strength, tracking skills, speed and courage of the Weimaraner fit in well with the new hunting scheme of things. These dogs, with their natural hunting tendencies, were a joy to work with in the field, ideal hunting companions on land and in water.

The Court of Weimar followed the Grand Duke, Karl August, in attempting to perfect the hunting talents of their dogs. As time passed, a group of amateur sportsmen formed a club, the purpose of which was to guard the future of the breed, breeding for the sport of it only. It was necessary to become a member of the club in order to be permitted to purchase a Weimaraner and to agree to abide by and uphold its rules and policies at all times.

The Weimaraner Club of Germany was organised at Erfurt on 20th June 1897. Incredible as it may seem as we regard the present and continuously growing interest in the Weimaraner, there were, at one time, fewer than one thousand of these wonderful dogs in existence. Now popularity is far more likely to become a problem than the threat of extinction!

Weimaraners received official recognition from the governing body in Germany in 1896, which included their entry into the German Stud Book. The earliest Standard of the breed was drawn up jointly by the German and Austrian clubs and adopted in 1935. These two clubs worked closely together for the benefit of the breed, assisting each other in every way.

The first breeding Weimaraners were imported into Australia in 1955 by Drs. Roma and Chris Kristenson, and later bred under the "Passau" prefix. Many dogs have been brought into the country since then, some having a major influence on the direction that the breed has taken. To those breeders we can credit today's Australian Weimaraner.

Initially the Weimaraner Longhair could not be exhibited under the original standard, it was not until the mid 1970's that the Longhair was accepted and was able to be exhibited in the same class as the Weimaraner. Following the adoption of the FCI Standard by the ANKC in 1994, the Longhair became a separate variety and was able to be awarded its own Best of Breed and challenge certificates. Both Weimaraner and Weimaraner Longhair make up the breed in Australia and the continued foresight and dedication of our breeders must maintain and improve the standard of our beloved dogs.

THE WEIMARANER

BRIEF HISTORICAL SUMMARY

There are numerous theories regarding the origin of the Weimaraner. One fact remains certain, that the Weimaraner at that time contained a great deal of Leithund blood. These dogs were kept during the first third of the 19th century at the Court of Weimar.



In the middle of the century, before pure breeding started, breeding was mainly in the hands of professional hunters and gamekeepers in central Germany, mostly in the regions round Weimar and Thuringia.

As the days of the Liam Hounds passed, the dogs were crossed with the Huhnerhund and breeding continued with this cross. From about 1890 on, the breed was produced according to a plan and regarded as suitable for registration in a studbook.

Apart from the short-haired Weimaraner, a long-haired variety occurred now and then. Since being admitted to the studbook, the Weimaraner has been pure bred, remaining mostly free from crosses with any other breed, in particular pointers.



Therefore the Weimaraner is likely to be the oldest German pointing breed, which has been produced for about a hundred years.

● GENERAL APPEARANCE

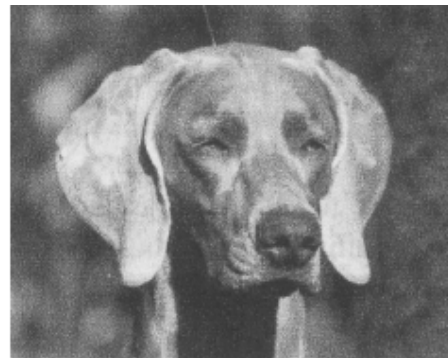
A medium to large size hunting dog. Functional working type, pleasing in shape, sinewy and very muscular. Difference in type between dogs and bitches easily distinguished.

A medium to large grey hunting dog, short or long coated with a moderate length of back and light to dark amber eye. He should present a picture of great driving power, stamina, alertness and balance. Above all, the dog should indicate ability to work hard in the field. The Weimaraner should be neither coarse nor too fine. He should be well muscled without being cumbersome - balance and moderation being the key.

Head Study

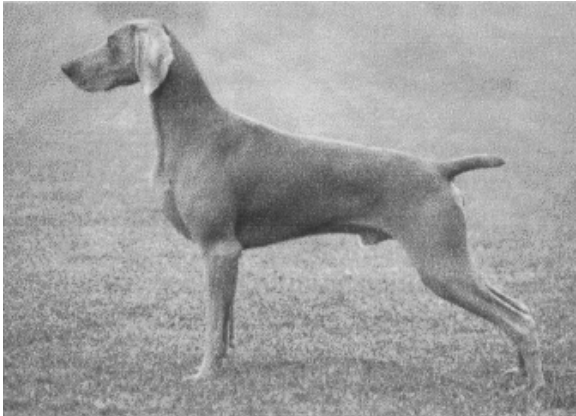


Male

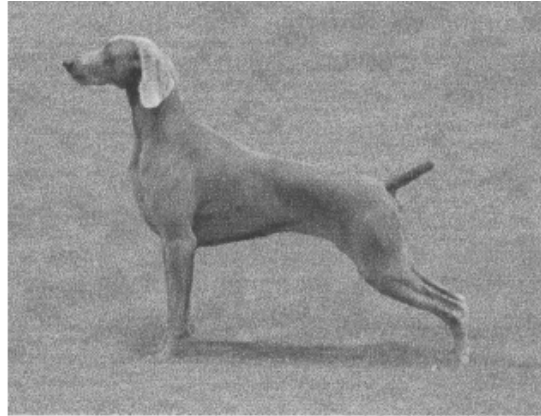


Female

PROFILE STUDY



Male



Female



LONGHAIR VARIETY

Head Study

Profile Study



IMPORTANT PROPORTIONS - Length of body to height at withers approximately 12: 11.

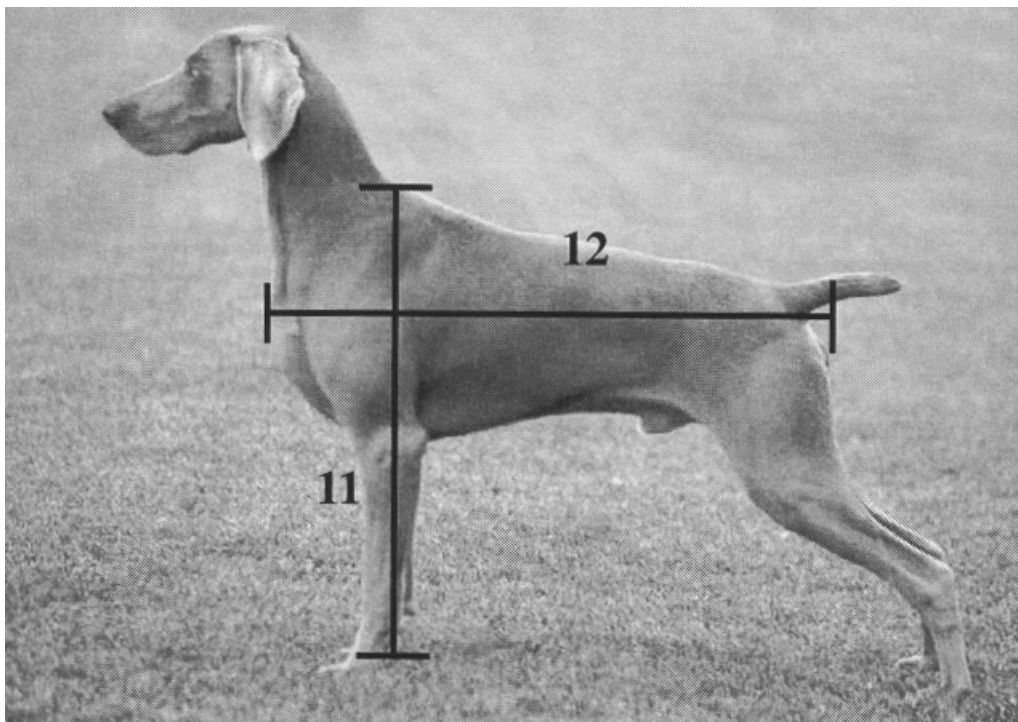
Proportions of the head: From tip of nose to stop slightly longer than from stop to occiput.

Forequarters: Distance from elbow to mid pastern and distance from elbow to point of withers about equal. [Distance from elbow to ground is slightly longer than distance from elbow to withers]

Clarification: Statement from the German Breed Warden:

Important Measurement Relations: As is stated in the Standard of the FCI [Ass. For the Breeding of the Weimaraner - Vorstehhundes] No. 99D of 27.2.1990, under item No.2, body length versus shoulder height a ratio of 12:11.

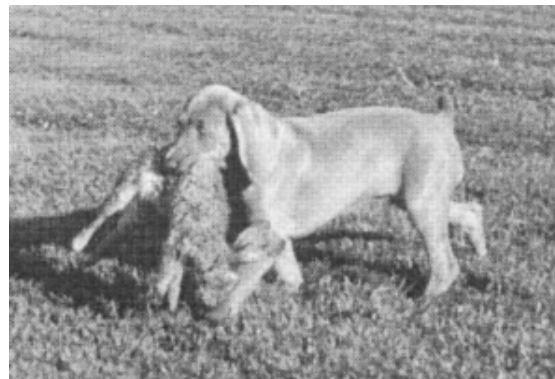
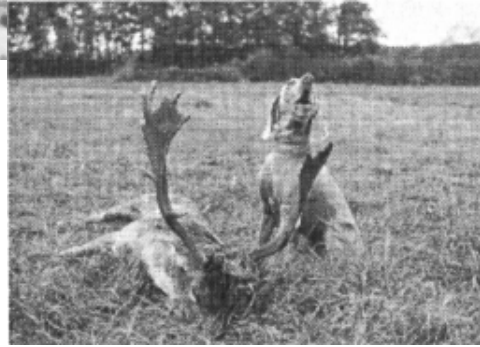
Origins: The 1952 Standard stated that a “somewhat longer back” is typical for the Weimaraner. Our Breeding Controller at the time, Herr Hartmann, who is fond of calculations, established the relation of 12: 11 of body length and shoulder height after a great number of measurements had been taken of typical dogs. This ratio was later included in the 1990 Standard. We were of the opinion that a Standard had to be conservative. i.e., Standard should not be basically changed. Therefore we transferred many items from the previous Standard, including the measurement relation 12:11.”



● CHARACTERISTICS

See also under General Appearance and Temperament.

In the case of the Weimaraner, his hunting ability is the paramount concern and any fault of body or mind, which detracts from this ability, should be penalised.



● TEMPERAMENT

Versatile, easily trained steady and passionate hunting dog. Persevering in systematic search, yet no too lively. Remarkable ability to pick up scent. Ready to seize game and other prey; he is a good watchdog, without aggressiveness however. Reliable pointing dog and worker in water. Remarkable inclination to work after the shot.

The Weimaraner distinguishes himself in particular by his close attachment to his owner and other persons well known to him. A friendly, fearless, protective and obedient dog. The inherent urge in the Weimaraner to protect can also be seen as the result of this close relationship with persons, their family, house and possessions. Aggressive, shy or timid behaviour should not be tolerated.



● **HEAD AND SKULL**

Skull: *In balance with the size of body and facial region. Broader in dogs than bitches, yet in both, the relationship between width and cranial region to total length of head must be in good proportion. Median groove on forehead. Slightly to moderately protruding occipital bone. Zygomatic arches easily traceable behind the eyes.*

Stop: *Extremely slight*

Nose: *Nose leather large, protruding over the under jaw. Dark flesh colour, merging gradually into grey towards the rear.*

Muzzle: Long and, especially in the male, powerful, appearing almost angular. Region of canines and carnassials teeth equally strong. Bridge of the nose straight, often slightly arched, never with a concave curve.

Flews: Moderately deep, flesh coloured, as are the gums. Slight labial corner.

Jaws: Powerful.

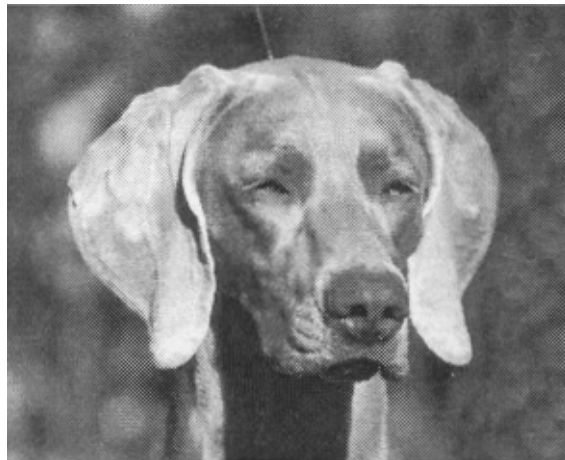
Cheeks: Muscular, clearly defined. Definitely clean head.

Lips and Flews moderately deep - not pendulous or cut away.

Jaw - strong, to allow carriage of game.

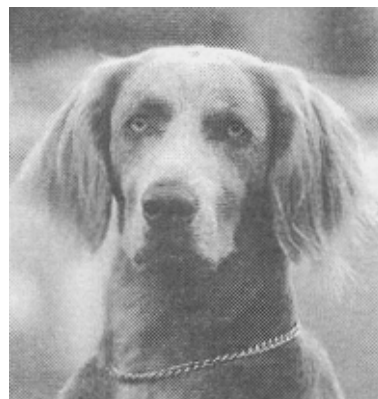
Stop - extremely slight but definite.

Female

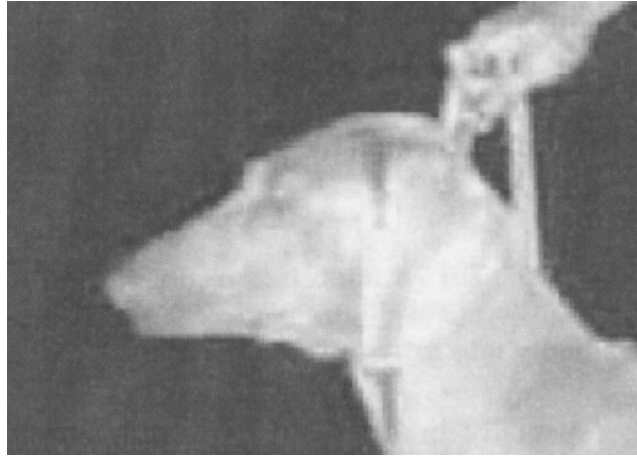


Ideal, shows characteristic folds of ears, nose, lips and median line

Male



EXAMPLES OF POOR HEADS



Extension

Dog above lacks underjaw and depth of muzzle



Dog above shows how the handler may alter appearance. i.e., holding the head strung up by the chain, this gives the impression of too high an ear set; ears possibly too short and exaggerated cheek muscles. All negative features on a head which should be of reasonable length and aristocratic.

- **EYES**

Amber colour, dark to pale, with intelligent expression. Sky-blue in puppies. Round, set barely slanting. Lids well fitting.

Sky blue in puppies; a transition in colour will occur up to approximately 18 months. When dilated under excitement, the eyes appear almost black.



Fully dilated pupil

Longhair showing a minimally dilated pupil



- **EARS**

Lobular, broad and fairly long, just reaching to corner of mouth. Set on high and narrow, forming a rounded off point at tip. In alertness, turned slightly forward and folded.

When drawn alongside the jaw, should end approximately 2.5 cm (1 inch) before the point of the nose. When attentive, they are slightly turned forward, and should reach approximately the corner of the mouth.

Illustrations show characteristic folding and mobility of ears.

This head study is considered by the Germans to be a classic and depicts correct folding of ears.



● MOUTH BITE

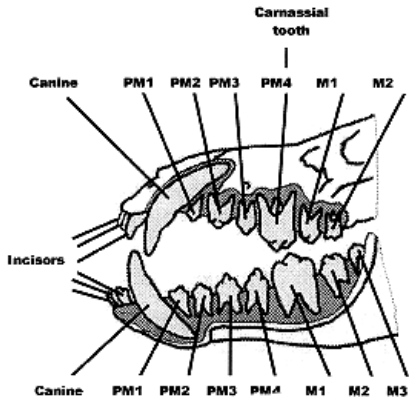
Complete, regular and strong dentition. Incisors should touch with a correct scissor bite.

See list of faults.



Good mouth, top teeth overlapping the bottom, healthy gums and teeth.

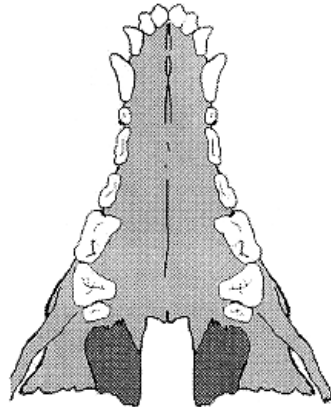
MOUTH: Diagrams



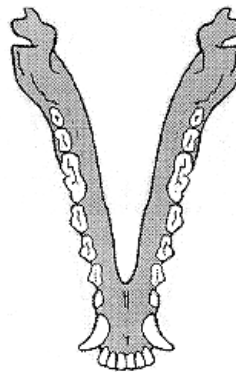
Complete adult dentition

TOP (Maxillary) - (each side)	3 Incisors 1 Canine 4 Premolars 2 Molars
BOTTOM (Mandibular) - (each side)	3 Incisors 1 Canine 4 Premolars 3 Molars
TOTAL	20 TOP 22 BOTTOM 42

Occlusal view of Maxilla



Occlusal view of Mandible



© GMSD, 2007, 2008, 2009, 2010

Complete dentition is greatly desired. The teeth should be sound, strong and evenly spaced, the lower incisors just behind but touching the upper incisors – that is a scissor bite.

INCORRECT

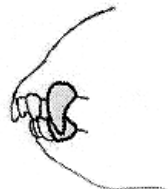
INCORRECT

INCORRECT

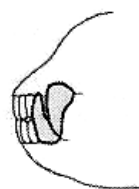
CORRECT



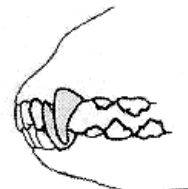
Undershot bite



Overshot bite



Level bite



Scissor bite

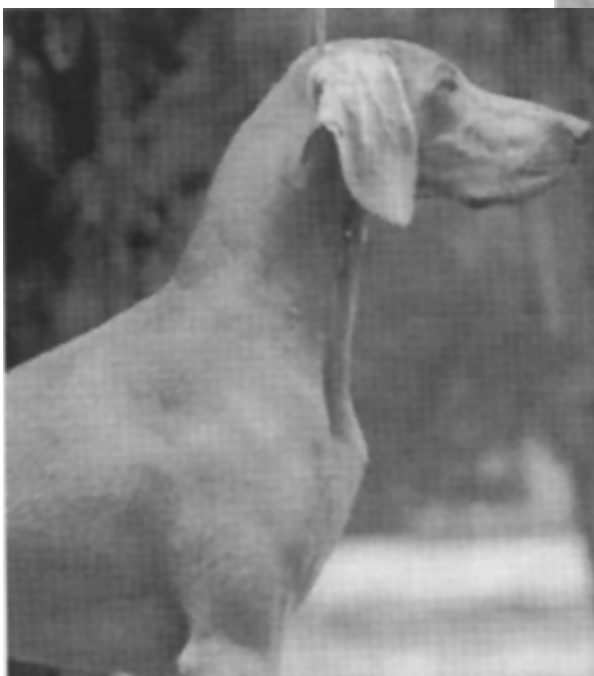
- **NECK**

Noble in appearance and carriage. Upper line arched in profile. Muscular, nearly round, not too short, clean. Becoming stronger towards the shoulders and merging harmoniously into the topline and chest.

See list of faults.

GOOD NECK AND CREST

Male



Female

● **FOREQUARTERS:**

Front legs: General: High on leg, sinewy, straight and parallel, but not standing wide.

Shoulders: Long and sloping. Well fitting, strongly muscled. Well-angulated shoulder joint.

Upper Arm: Sloping, sufficiently long and strong.

Elbows: Free and lying parallel to median plane of body. Turned neither in nor out.

Forearm: Long, straight and vertical.

Pastern joint: Strong and taut.

Pastern: Sinewy, slightly sloping.



Good front



Out at elbow



Wide front

GOOD SIDE FRONT



Immature dog



Mature dog

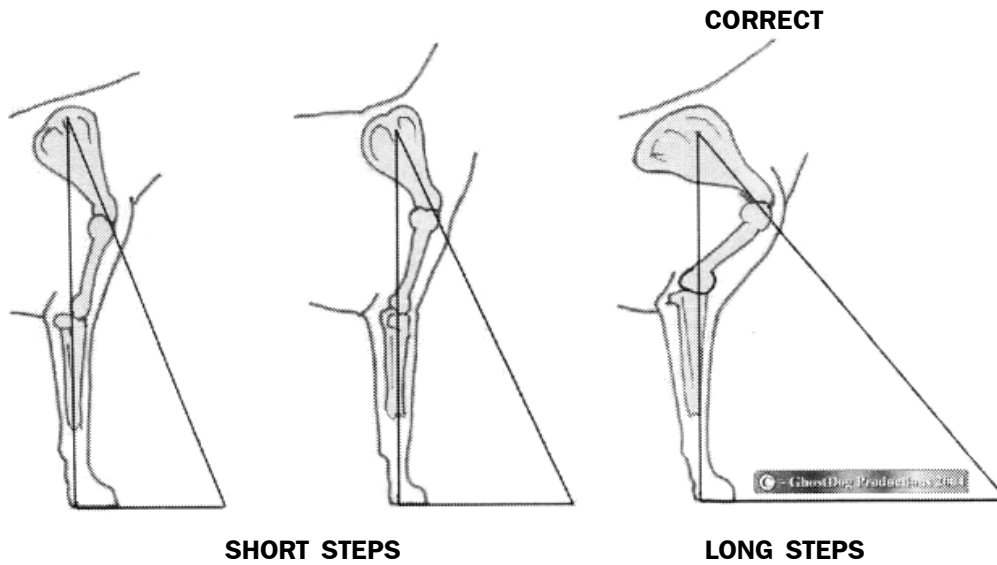


Straight pasterns



Down in pastern

HOW SHOULDERS AFFECT MOVEMENT



Example of good reach from well placed shoulders

● BODY

Topline: From the arched neckline, over the well defined withers, the topline merges gradually into the relatively long, firm back.

Withers: Well defined.

Back: Firm and muscular, without a dip. Not running up towards the rear. A slightly longer back, a breed characteristic, is not a fault.

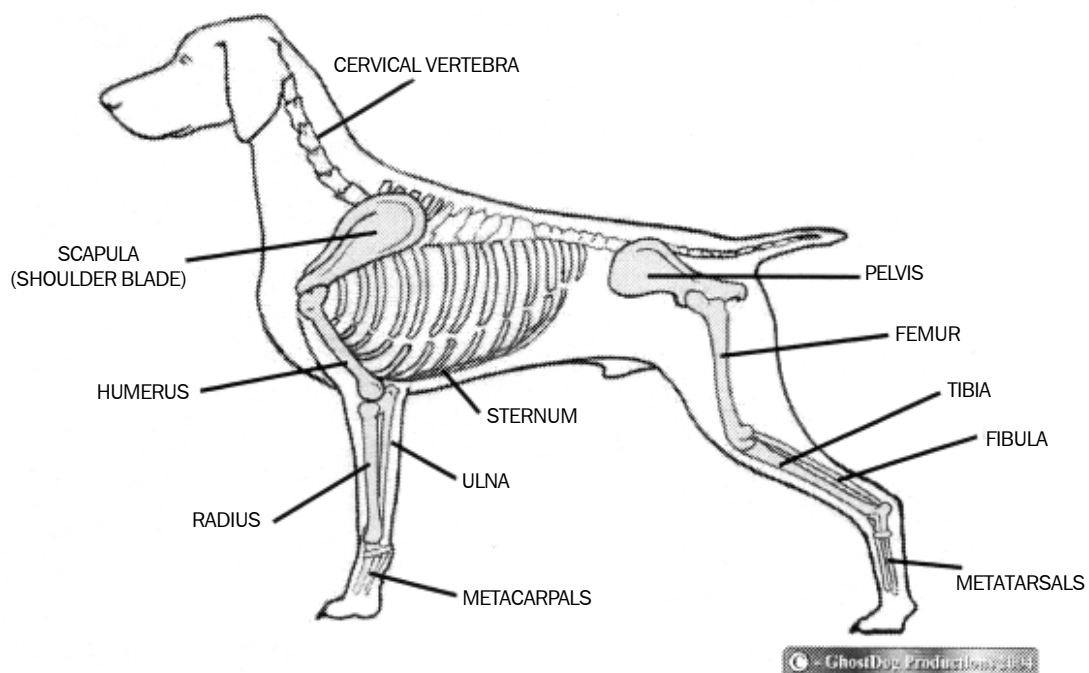
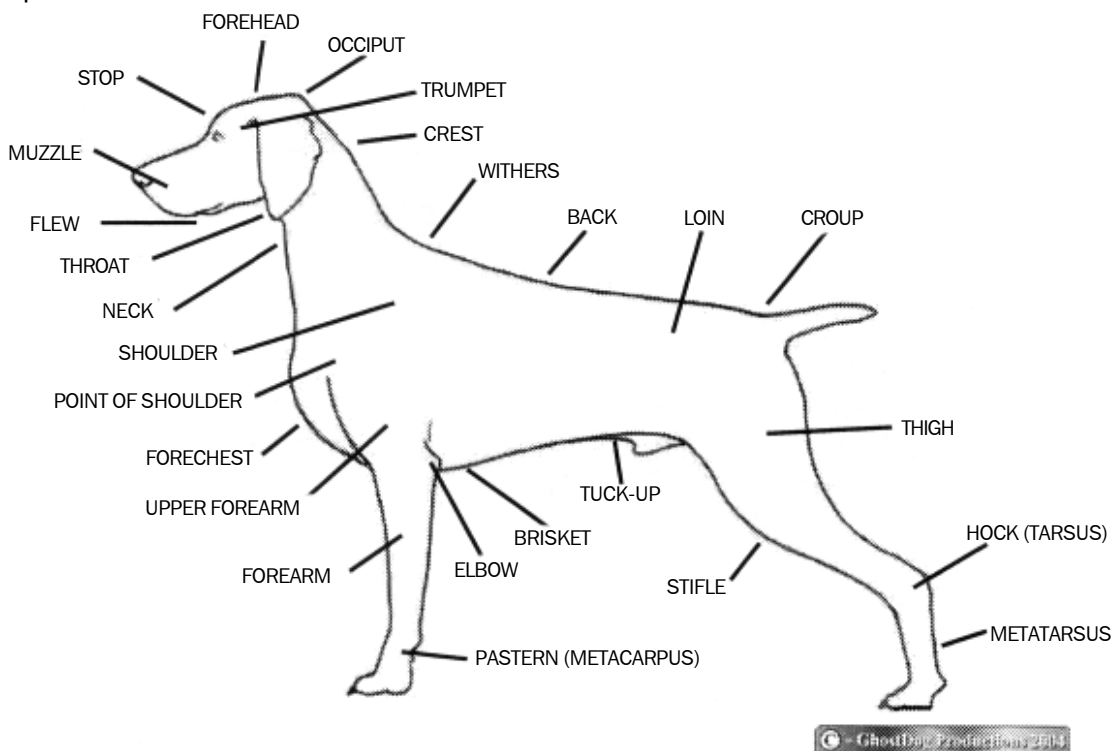
Croup: Pelvis long and moderately sloped.

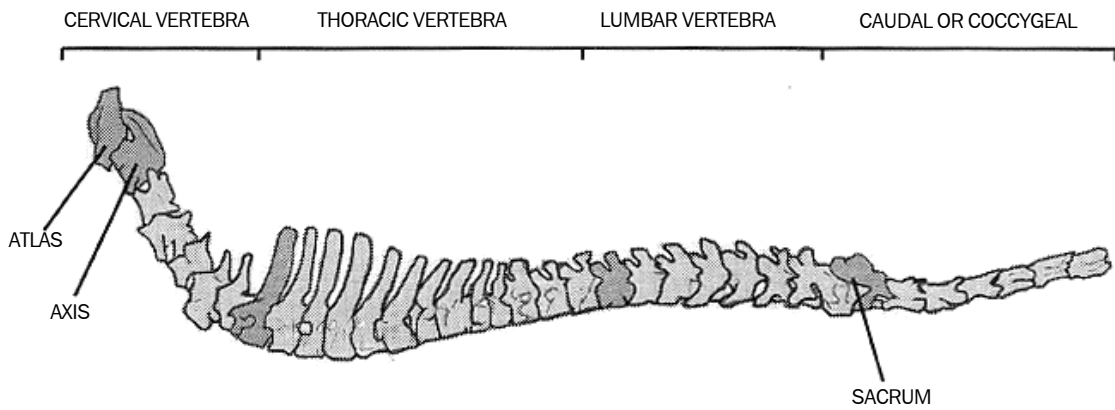
Chest: Strong but not unduly broad, with sufficient depth to reach almost to the elbows and of sufficient length. Well sprung ribs without being barrel-shaped and with long ribs. Forechest well developed.

Underline and Belly: Rising slightly, but belly not tucked up.

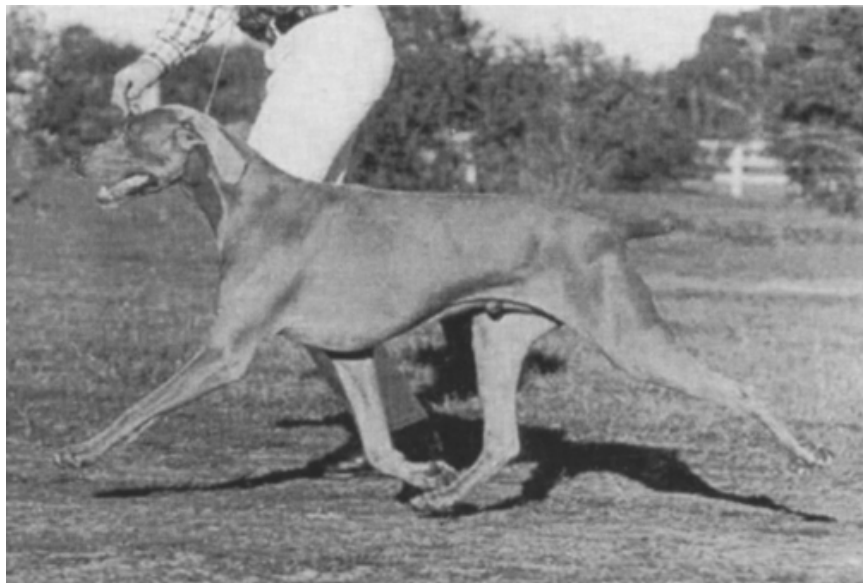
The back should be held firmly and level when moving. The loin is moderate, wide and deep over a moderately tucked up flank and firmly held abdomen. This powerful loin should join to powerful hindquarters.

The back in anatomical terms, being that portion of the topline commencing from a point just behind the withers and ending at the loin/croup junction. i.e., the combined thoracic and lumbar vertebral regions of the spine - "Canine Terminology" - by H. R. Spira.





Good Topline



Dog shows very good example of correct topline on the move



Back too short, low tail set, roached over the loin.

Poor backs and toplines



Dips behind wither, low tail set, also appears too short in proportions height to length.



Sharp neck into shoulder and dip behind wither

● HINDQUARTERS

General: *High on leg, sinewy and well muscled. Standing parallel, turning neither in nor out.*

Upper Thigh: *Sufficiently long, strong and well muscled.*

Stifle: *Strong and taut.*

Lower Thigh: *Long with clearly visible tendons.*

Hock Joint: *Strong and taut.*

Hock [Rear pastern]: *Sinewy, almost vertical in position.*

It is to be remembered always that the propulsive power of the dog has its origin in the hindquarters, therefore the hindquarters should be large and powerful with well developed muscular thighs, upper and lower thigh should be of equal length with a moderate turn of stifle and strong hocks with good width of first and second thigh.

As a shooting dog, the Weimaraner is required to cover much territory in the course of a day's work, he must have ample speed, as well as the ability to sustain it for hours on end. For these purposes a well-bent stifle, a long second thigh, a low short hock, and a powerful achilles tendon are all essential. A dog with a straight leg, without angulation unsupported by an ample thigh, would look as if he were walking on stilts, moving without liberty or power. Usually, such a formation of quarters is accompanied by an upright shoulder, which compounds the fault.

Good hindquarters with correct turn of stifle. Also shows a well developed second thigh.



Good rear

Cowhocks



Toed-in,
bandy-legged

● **FEET**

Front: Firm and strong. Standing straight in relation to median plane of body. Toes arched. Longer middle toes are a breed characteristic and therefore not a fault. Nails light to dark grey. Pads well pigmented and coarse.

Hind: Tight and firm, without dewclaws, otherwise like the front feet.

Dewclaws appearing on the front feet are removed to reduce injury, both in the field, working environment and as a companion dog.



a) Correct foot



b) Cat foot



c) Hare foot



d) Splayed foot, spread to show typical webbing

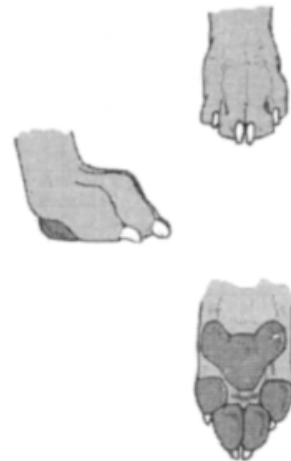
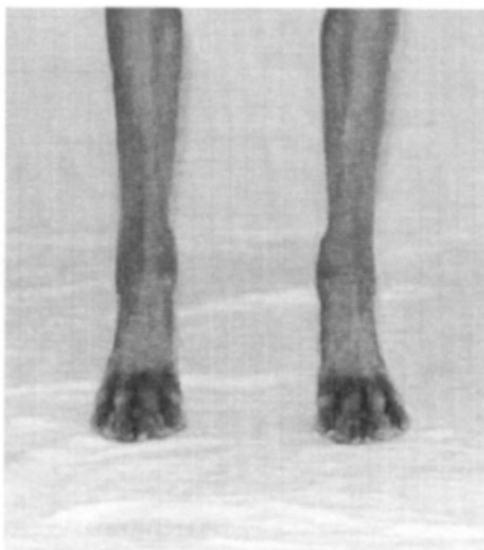


e) Paper foot



f) Dewclaw

GOOD FEET — FRONT, SIDE & UNDER VIEWS



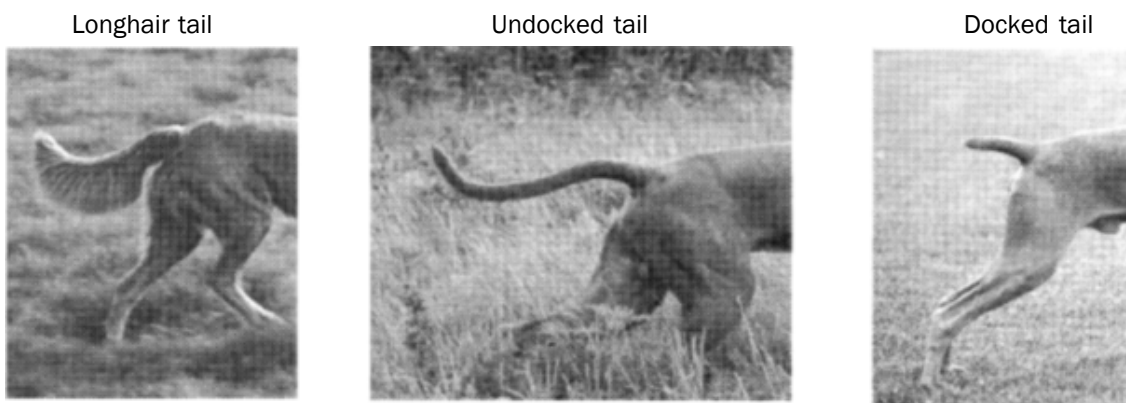
- **TAIL**

Set on slightly lower than with other similar breeds. Tail strong and well coated. Carried hanging down in repose. When alert or working, carried level or higher.

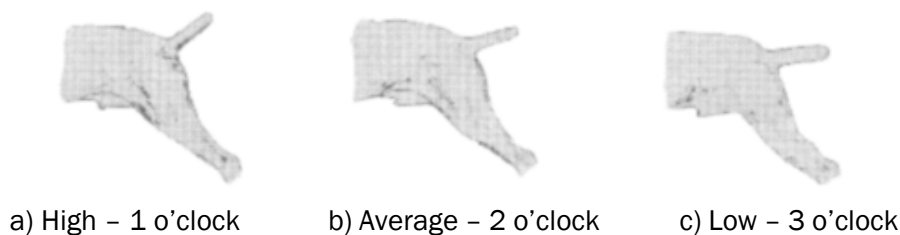
The thickness of the tail in proportion to the body with a tendency to be light rather than heavy and should be carried in a manner expressing confidence and sound temperament.

The set on of the tail may well determine how the tail is carried. If the set on is low then the tail may hang down from the body. If the set on is high, then the carriage may well be over the back, particularly when on the move. So long as the tail is not set like a terrier and carried up and over the back then carriage should not be of great importance.

In the case of Weimaraners with docked tails - the tail should cover the scrotum in males and the vulva in females



TAIL CARRIAGE



In the Weimaraner, the tail is typically carried at 2 o'clock when moving. Tail carriage (the manner in which the tail is carried) is unrelated to tail set and reflects the dog's temperament and attitude. A tail that is carried almost vertically is known as a gay or terrier tail, and a Weimaraner that is feeling particularly bold or aggressive may express this attitude through a high tail carriage. Low tail carriage, of itself, is not faulty, though it is less attractive and it may indicate a lack of self-confidence.

● **GAIT / MOVEMENT**

Movement in all gaits is ground covering and smooth. Hind and front legs set parallel to each other. Gallop long and flat. Back remains level when trotting. Pacing is undesirable.

Gait is the test of structure. Good angulation contributes to long and effortless stride and smooth action. Correct shoulder angulation allows for correct extension and reach. Correct angulation of the hip joint plays a vital role in providing strength and drive to the hindquarters. Elbows should be against the body on the move and not flapping around. Front movement should not be hackneyed nor toeing in nor out. At a trot, the body is supported by only two legs at a time, which move as alternating diagonal pairs. Therefore to achieve balance, the legs will angle inwards toward a centre line beneath the body, and the greater the speed, the closer they come to tracking on a straight line. Topline should not sag, bounce or roach, but remain strong and level on the move.

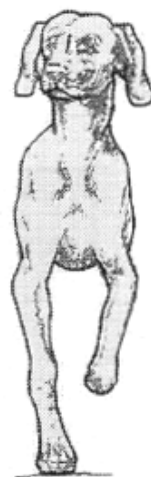
COMPARISONS OF FRONT & REAR MOVEMENTS AND FAULTS



A) CORRECT



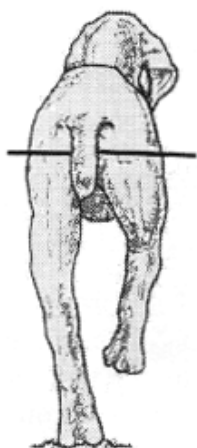
B) CROSSING OVER (WEAVING)



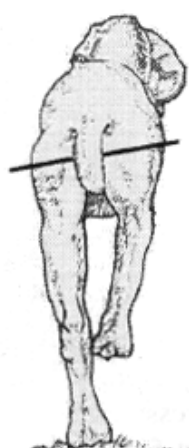
C) OUT AT ELBOW WITH TOEING IN



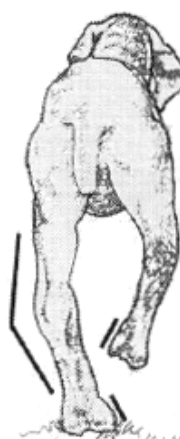
D) PADDLING (WINGING)



A) CORRECT



B) CROSSING OVER (WEAVING)



C) OUT AT HOCKS WITH TOEING IN



D) IN AT HOCKS, TOEING OUT (COW-HOCKED)

● COAT

Skin: Strong. Well fitting but not too tight.

Qualities:

Short-haired.

Short (but longer and thicker than with most comparable breeds) strong, very dense smooth lying topcoat. Without or only with very sparse undercoat.

Long-haired.

Soft long topcoat with or without undercoat. Smooth or slightly wavy. Hair at base of ear long and flowing. Velvety hair is permissible on tips of leathers.

Length of coat on flanks 3-5 centimetres On lower side of neck, forechest and belly, generally somewhat longer Good feathering and breeching yet less long towards the ground. Tail with a good flag Hair between the toes. Hair on head less long. A type of coat similar to a double- coat (stockhaar) with medium length, dense, close fitting topcoat, thick undercoat and moderately developed feathering and breeching sometimes occurs in dogs of mixed ancestry.

● COLOUR

Silver, row or mouse grey, as well as shades of these colours. Head and leathers generally slightly paler. Only small white markings on chest or toes permitted. Sometimes a more or less defined trace occurs along the back. Dogs with definite reddish yellow markings may only be given the classification good. Brown marking is a serious fault

Small white marks (other than on the chest and toes) may appear elsewhere as a result of injury and should not be penalised. Small brown spots on eyebrows and cheeks (Dobermann-like points) are serious faults.

● SIZE

Height at Withers:

Dogs: 59 - 70 cms (23½-27½") Ideal: 62-67 cms (24½-26½")

Bitches: 57 - 65 cms (22½- 25½") Ideal: 59-63 cms (23-25")

Weight.

Dogs: Approx. 30-40 kgs (60-88 lbs)

Bitches: Approx. 25-35 kgs (55-77 lbs)

● FAULTS

Any departure from the foregoing points should be considered a fault and the seriousness with which the fault should be regarded should be in exact proportion to its degree.

● SERIOUS FAULTS

Serious deficiencies i.e., skin very fine or very coarse.

Mixture of coat varieties defined in the Standard.

Clear deviation from type. Untypical sexual characteristics.

Gross deviations of size and proportions.

Facial region: Gross deviations e.g. too strong flews, short or pointed muzzle.

Jaws and teeth: Lack of more than two PM I or M3.

Eyes: Slight faults, above all slight and unilateral faults in eyelids. [Any fault with the eyes and/or the eyelids is considered a serious fault.]

Ears: Definitely short or long, not folded.

Throatiness (dewlap): Great deviation in neck shape and muscle.

Back: Definite sway or roach back. Rump higher than withers.

Chest, belly: Barrel shaped chest. Insufficient depth or length of chest. Tucked up belly.

Gross anomalies in stance i.e., lack of angulation, out at elbows, splayfeet.

Pronounced bow legs or cow hocks.

Bad movement in different gaits, also lack of free forward movement or drive, pacing.

Lack of feathering on belly or leathers (leather ears). Widely spread woolly coat in the shorthaired Weimaraner or curly or sparse feathering in the longhaired variety.

Departure from shades of grey, such as yellow or brownish, Tan markings.

Strong departure from correct height or weight (e.g. more than 2 cm from measurements given in the standard).

Slight deficiency in temperament.

Other serious faults.

● **DISQUALIFYING FAULTS**

Completely untypical, above all too heavy or too light in build.

Completely unbalanced.

Absolutely untypical, e.g. bulldog type head.

Facial region: Absolutely untypical i.e. distinctly concave nasal bridge.

Jaws and teeth: Overshot, undershot, missing further teeth other than quoted.

Eyes: Entropion, Ectropion.

Ears: Absolutely untypical i.e. stand-off.

Particularly pronounced dewlap.

Back: Severe sway or roach back. Definitely overbuilt at croup.

Chest and belly: Markedly barrel shaped or malformed chest.

Legs rickety or malformed.

Chronic lameness.

Totally restricted movement.

Skin defects and malformations.

Partial or total loss of hair.

White markings other than on chest and feet.

Colour other than grey. Widespread brown marking.

Definitely over or under sized.

Other malformation. Illness, which must be considered hereditary, i.e. epilepsy.

Faulty temperament i.e., shy or nervous.

NB: Male animals should have two apparently normal testicles fully descended into the scrotum.

ACKNOWLEDGEMENTS

The National Weimaraner Council (Australia)
would like to thank the following parties for their contributions
and help in making this Breed Standard Extension possible.

Mrs Virginia Alexander - USA

Mrs Patsy Hollings – UK

Canine Terminology- H.R.Spira

Standard translated by C.Seidler

The State Weimaraner Clubs in Australia

and all contributing Weimaraner breeders
and owners throughout Australia.

Special thanks to Dr Lindsay Dyson and Mrs Ann Lands
for the many days spent compiling, typing and
scanning for the production of this book.

